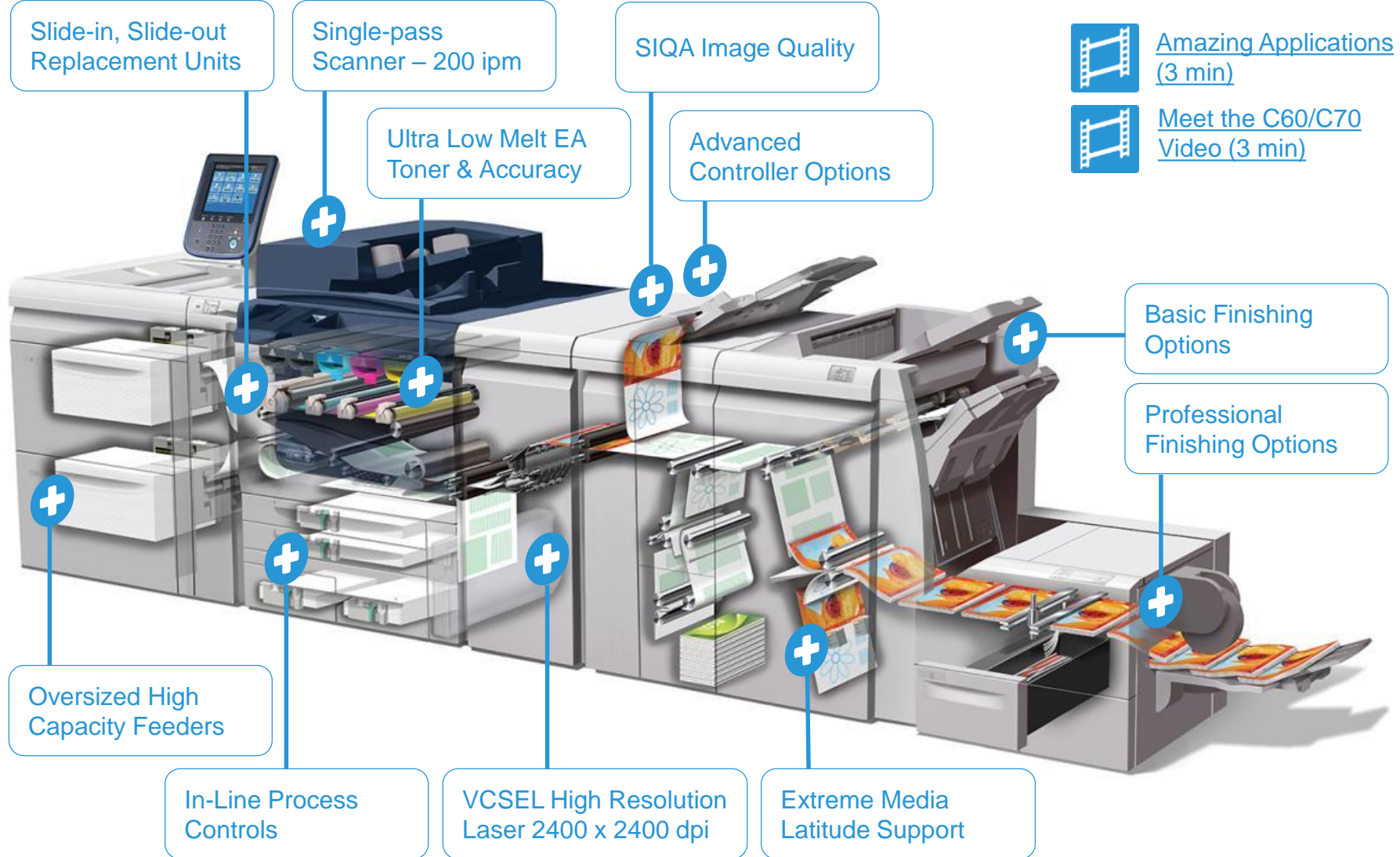


# Xerox® Colour C60/C70 Printer Made Easy

[Click here for additional links](#)



Click on each item to learn more.



# Total control. Reliability when you need it most.

## Certified Highly Reliable

### Xerox® Smart Kit® Customer Replaceable Units

All printers have components that eventually wear out. Simple slide-in, slide-out replacement keeps you up and running.

### Smart eSolutions, Xerox® MeterAssistant®, Xerox® SuppliesAssistant® and Xerox® MaintenanceAssistant

Automatically send data to Xerox support, simplifying billing, supplies replenishment and fault code analysis

### Custom Paper Profiles and Alignment

- Create, store, and retrieve unique paper profiles that can be used whenever you need them.
- SIQA (Simple Image Quality Adjustment) user can set alignments and density.

#### Smart Kit Customer Replaceable Units-

Fuser



Drum Cartridges



Toner and Waste Containers



Charge Corotron



### Paper Setup Alignment Profiles



# Single-pass Colour Scanning

200 impressions per minute

So, why isn't there "show through" on the single pass duplex sheet going so fast?

Xerox® Exclusive Hybrid Shading Correction Technology. The side 2 scanning area consists of the Contact Image Sensor (CIS), facing the white reference plane in parallel.

A split second before scanning a document, the scanner sets white point and collects the shading data necessary for Shading Correction Processing.

Standard included features:

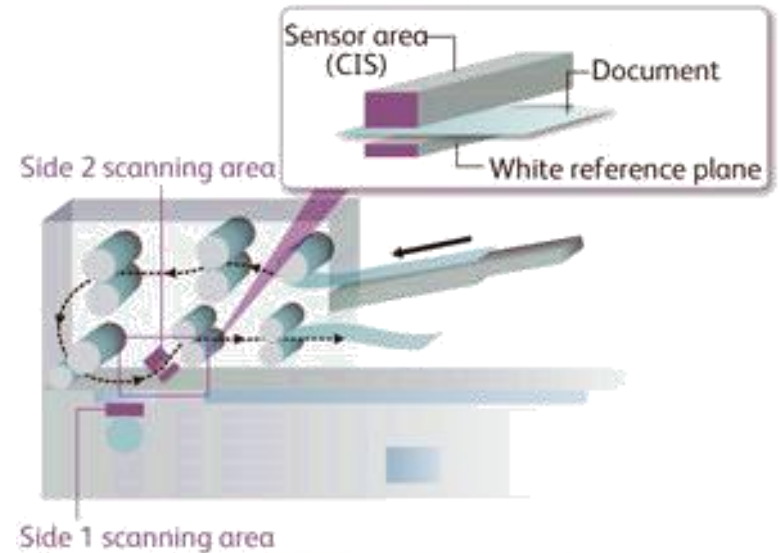
Thumbnail Preview

Scan to USB

Network Scanning

Scan to PC

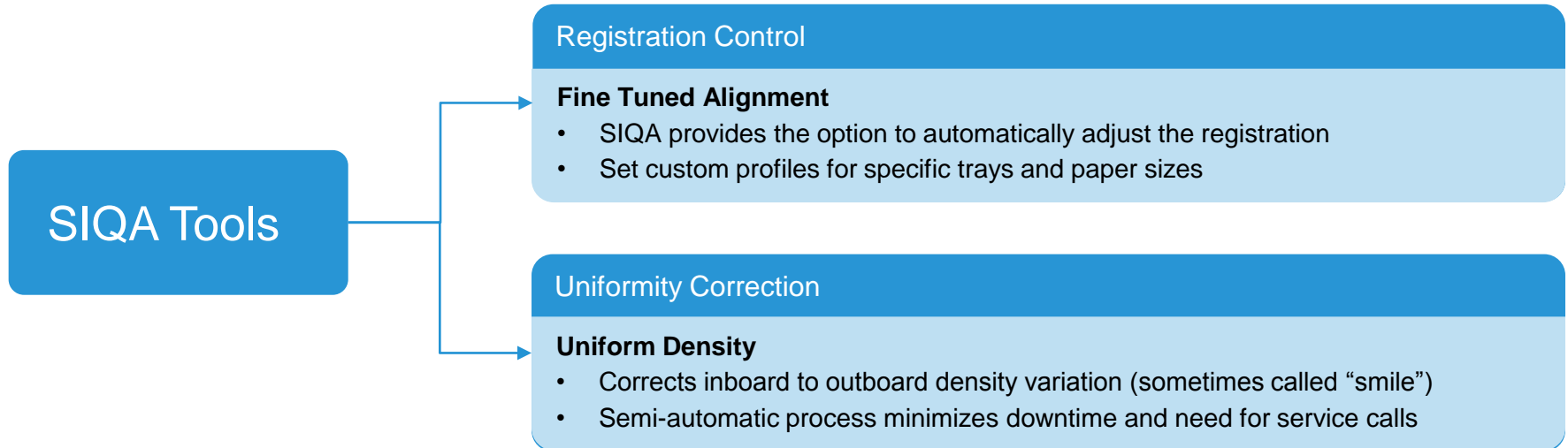
Searchable PDF



# Simple Image Quality Adjustment (SIQA)

More control. Superior results.

- Precise adjustment for registration & density uniformity
- Combines power and ease of use with consistent quality
- Gives accurate colour edge to edge, page to page



[Density Adjustment Video \(SIQA\) 1 min](#)

[Registration Adjustment Video \(SIQA\) 1 min.](#)



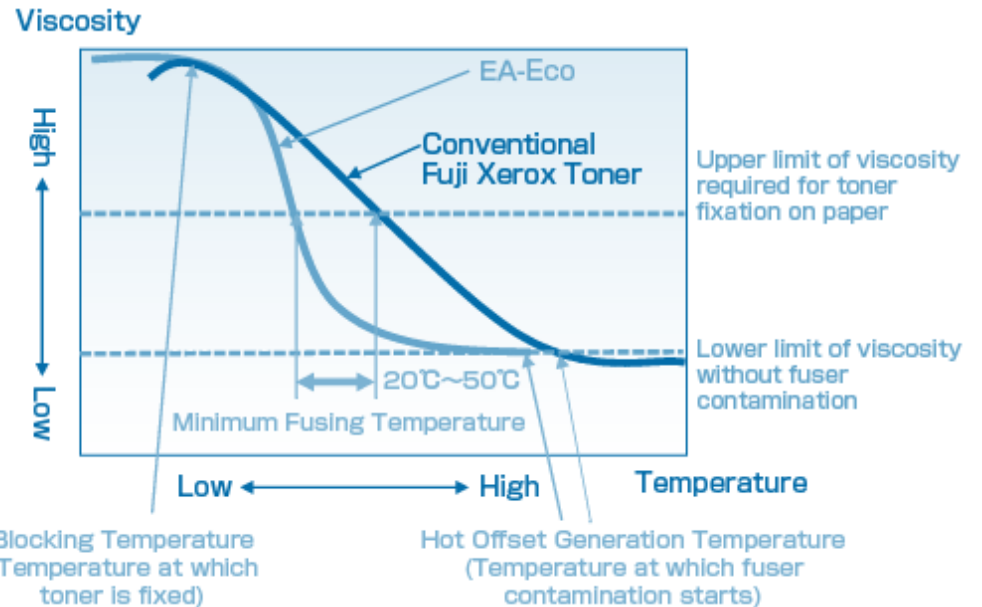
# Emulsion Aggregation Toner

Enables exciting applications and accuracy

EA Toner is chemical toner prepared by Emulsion Aggregation, or a chemical process used to “grow” very small, uniform particle sizes from even smaller size toner components.

Xerox® Ultra Low Melt EA process delivers the desired size and narrow particle size distribution with better fuse to unique substrates.

This technology opens a wide array of media opportunities. Chemically bonding to synthetics, polyester, vinyl, labels, signs and challenge media like linens.





# Oversized High Capacity Feeders

Capacity when you need it the most.

Single or Dual – 2,000-sheet capacity trays or 4,000-sheet extra capacity.

Paper stabilizer minimizes skew for custom paper, four blowers assist feeding and improve reliability on the toughest of media. Includes friction roller system to prevent mis-feeds.

Media sizes up to 330 x 488 mm  
Media weight 64 gsm uncoated or 106 gsm coated to 300 gsm  
220gsm auto duplex all stocks.

**New** Support for heavy media with extra blower, Customer Replaceable Friction Feed rollers, Small Media Bracket, Storage.



# VCSEL ROS Technology

Amazing Detail - Every Time

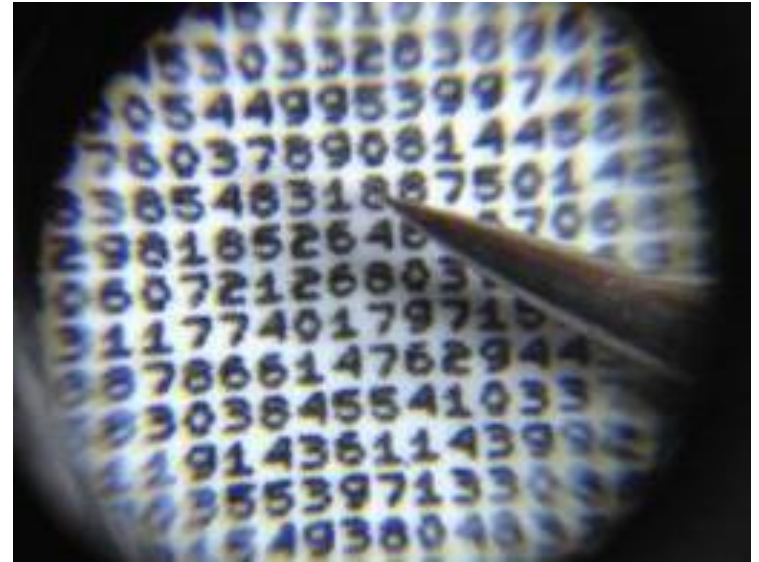
Xerox proprietary technology – a surface-emitting type of semiconductor laser dubbed the Vertical-Cavity Surface-Emitting Laser diode (VCSEL) ROS Raster Output Scanner – Xerox succeeded in controlling 32 beams in one scan. Thus, we achieved true 2400 x 2400 dpi resolution.

This technology delivers small letters, fine lines, and smooth gradations—Comparable or better than that of offset printing.

**VCSEL Vertical-Cavity Surface-Emitting Laser diode.** Instead of a set of facet mirrors on the cleaved surface rotation. In contrast, the VCSEL has an optical cavity perpendicular to the substrate and emits light in the vertical direction.

[Read more](#) VCSEL-ROS Laser scanning technology for high-speed with high image quality

[Read more](#) Image Registration Control Technology (IReCT) Colour registration control technology for image correction with ultra high precision



**Xerox® Colour C60/C70 Printer: 0.6 point font Xerox® MicroFont pictured with a tip of a pin**

We've combined class-leading print resolution (2400 x 2400 dpi) and the unique properties of Xerox® EA Toner with ultra-low melt technology.



# In-Line Process Controls

Automatic. Routine. Accurate.

## Process Controls are run automatically by the C60/C70—Before, During and After Printing

Process Control “ProCon” is the in-line process by which CMYK patches are laid down on the IBT (Intermediate Belt Transfer) and read via internal sensors throughout a print run. The number of patches and frequency is optimized for speed and quality.

The end-user may be unaware of the automatic, routine density checks in a print run—You may see “Adjusting Image Quality” flashed on the top of the C60/C70 User Interface.



### Automatic Sensor Adjustments: (TRC)

- 13%,30%,45%,60%,75%, 100% patches for CMY
- 15%,30%,50%, 100% patches for Black

### Real Time Run Control Patches

- Startup/Power and after 4 hours of inactivity, Temperature and humidity change
- When the fuser area is opened and closed,
- When changing from Uncoated to Coated stock

### During Print Runs (no interruption)

- Two colour patches at a time (C and K, Y and M, colours in station 1 and 2) are developed in the inter-image area and read by the In and Out ADC Sensors to make slight changes on the fly:  
An 75% patch for Colour (devbias)  
An 50% patch for Black (devbias)





# Controller choices expand your capabilities.

A perfect fit for your challenges.



Ultimate Colour Management

## EX Print Server Powered by Fiery® for the Xerox® Colour C60/C70

Get the most from your printer with an innovative, scalable, integrated solution. The ultimate in productivity, accuracy and workflow.



Productivity, ROI

## Xerox® EX-i C60/C70 Print Server powered by Fiery®

World-class colour and workflow tools that put you in command. Produce precise, exact colour from all applications, platforms and formats. Options for variable printing to easy booklets / imposition.

## Xerox® FreeFlow® Print Server Integrated

Built for Production workflows on an Integrated Windows platform. All the power and simplification needed for today's colour and job management needs. [Virtual Demonstration \(click here\)](#)



Base Office Workflows

## Xerox® Integrated Colour Server

Ideal fit for high-end office applications, you will be delighted with unrivaled simplicity.



# Digital Front Ends – Tuned for A Perfect Fit

Feature, Function,  
Workflow

Adv. Colour  
Tools

Robust Job  
Setups

Mixed Media

Variable

Adobe  
Suite Jobs

Microsoft  
Office

Xerox® EX C60/C70 Print  
Server Powered by Fiery®

Xerox® EX-i C60/C70 Print Server  
Powered by Fiery®

Xerox® FreeFlow Print Server Integrated  
for the Xerox® Colour C60/C70 Printer

Xerox® Integrated Colour  
Server for the Xerox®  
Colour C60/C70 Printer

Environment, Speeds, Volumes

Office and Creative

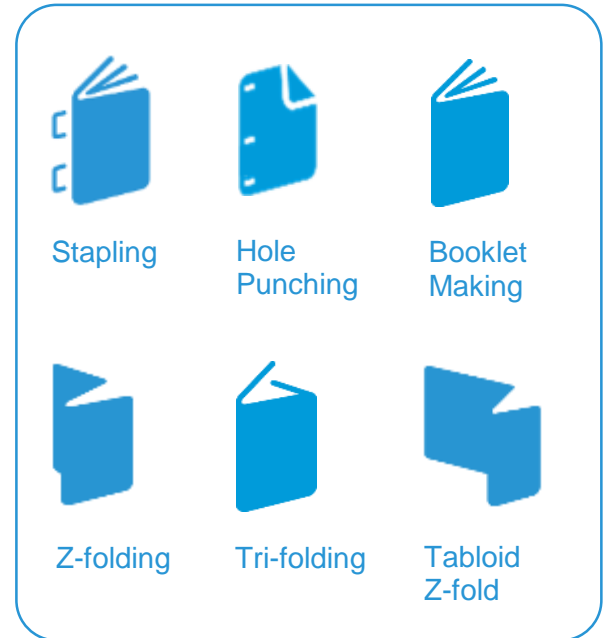
Creative, Marketing Use

Production



# Finishing touches – modular to fit your needs.

From everyday work to promotional material, the Xerox® Colour C60/C70 Printer's Business Ready (BR) Finisher is up to the task.



BR Finisher	BR Booklet Maker Finisher
<ul style="list-style-type: none"> <li>• Offsetting,</li> <li>• 2/4 hole punching</li> <li>• Top Tray: 500 sheets, Stacker Tray: 3,000 sheets</li> <li>• Staple 50 sheets – front, rear, dual, four-position</li> </ul>	<ul style="list-style-type: none"> <li>• Offsetting</li> <li>• 2/4 hole punching</li> <li>• Top Tray: 500 sheets 1,500 stacker</li> <li>• Staple 50 sheets – front, rear, dual, four-position</li> <li>• Saddle-stitch stapling</li> <li>• V-folding, dual staple heads</li> <li>• Saddle stitch booklet up to 16 sheets uncoated, 7 sheets coated, ~20 sets</li> </ul>
C Fold / Z Fold Unit available	
Convenience Stapler available	



# Robust finishers that deliver satisfied customers.

## Light Production Finisher with Booklet Maker and Folder

- Multiple location stapling and hole punching
- Coated and uncoated paper up to 100 sheets
- 500-sheet top tray, 3,000-sheet stacker tray, 200-sheet interposer
- Booklet finisher that enables coated bi-folding and saddle stitched coated booklets
  - Up to 25 sheets
  - Folding module for tri- and Z-folding and A3 Z-fold
- Built-in decurler to ensure flat output to booklet maker



- 1 Active Decurling for Heavyweight Stock
- 2 Interposer Input Tray
- 3 Trifold, Z-Fold
- 4 1,500-sheet Stacking, 2/4-hole Punch, 50-sheet Stapling
- 5 Bi-fold, A3 Z-Fold, Saddle-stitch up to 25 sheets



# Professional finishing – The key to a perfect job.



## Xerox® SquareFold® Trimmer Module

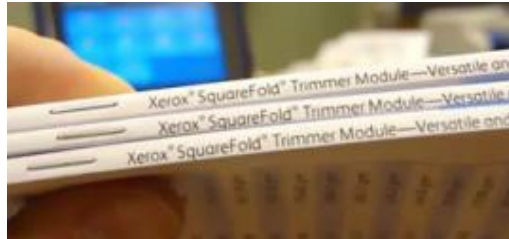
- Square fold up to 25 sheets
- Face trim between 2-20 mm

[View the Spec Sheet](#)

## GBC® AdvancedPunch™

- Punch configurations available for letter/A4 sizes
- Interchangeable die sets and options

[View the Spec Sheet](#)

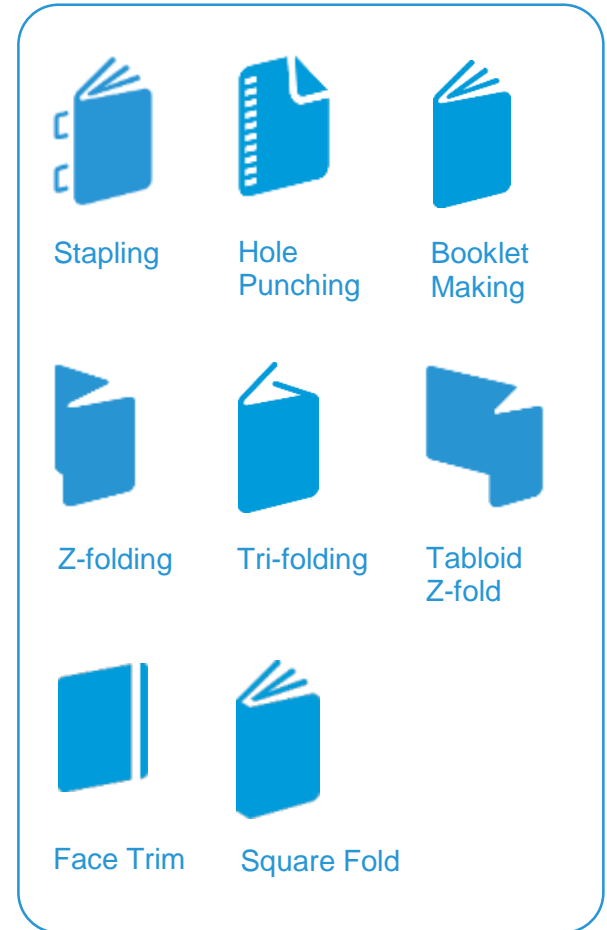


Square Fold Fact Trim – Side view



GBC punch – Twin Loop Wire, Spiral example

Others dies available—19Hole CombBind, 44-Hole ColorCoil, 21-Hole WireBind, 32-Hole WireBind, 11-Hole VeloBind, 32-Hole ProClick, more





# High-value applications are no longer just a dream – now they're at your fingertips.

The Xerox® Colour C60/C70 superb image quality, robust media latitude, flexible finishing and server options put you in the applications business.

- Brochures, Posters, Signs, Labels, Menus
- Booklets, Photo Books
- Reports, Newsletters, Calendars

## Synthetics and Unique Applications

- Carbonless and Ordered Stock
- Image on Precut Tabs
- Transfer Papers
- Linen
- Magnets



[Amazing Apps Video \(3 min\)](#)



# Learn More

## Xerox® Colour C60/C70 Printer

### Brochures, Specifications

[C60/C70 Brochure](#)

[Detailed Specifications](#)

[C60/C70 Website](#)

[Presentation / PPT](#)

### Video

[Amazing Applications! \(3 min\)](#)

[Meet the C60/C70 \(3 min\)](#)

[Open-The-Doors \(6 sec Vine\)](#)

### Demos and Tours

[Virtual Demonstration / Tour](#)

### Papers, How To's

[“How To” Posters](#)

### Certification and Solutions

[Certifications Fact Sheet](#)

[Solutions Compatibility Matrix](#)



Click here for the latest version of this document  
<http://www.office.xerox.com/latest/X60PA-03E.PDF>

